

IP56 FIBRE BREAKOUT BOXES

Technical information

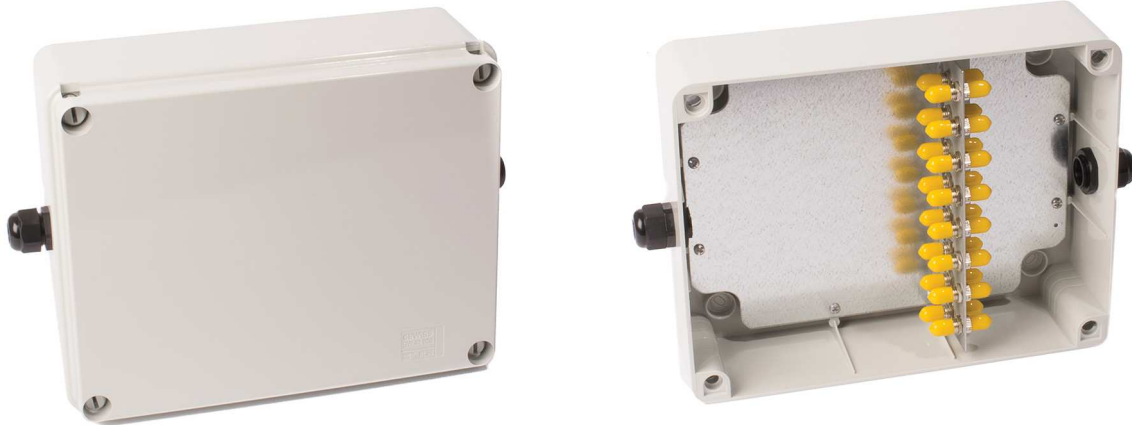


Features:

- ◆ Weatherproof fibre enclosures
- ◆ Fitted with ST, SC or LC adaptors
- ◆ Capacity for up to 32 fibres
- ◆ Lid with turnbuckle fixing
- ◆ Suitable for wall mounting
- ◆ 2 x 20mm cable entry knockouts
- ◆ Cable strain relief facility

Physicals

Material	Polycarbonate
Dimensions	2800 x 260 x 110mm



Part Numbers

Item	Description	Mode	Connector	Type	Colour
801082	12 Way IP56 Breakout Box	SM	ST	12 x Simplex	Grey
788013	16 Way IP56 Breakout Box	SM	ST	16 x Simplex	Grey
800941	16 Way IP56 Breakout Box	SM	SC	8 x Duplex	Grey
804101	16 Way IP56 Breakout Box	MM	LC	4 x Quad	Grey
788014	16 Way IP56 Breakout Box	SM	LC	4 x Quad	Grey
788015	24 Way IP56 Breakout Box	SM	LC	6 x Quad	Grey
788017	32 Way IP56 Breakout Box	SM	LC	8 x Quad	Grey